



# mai<sup>TM</sup> Compact Top







### maiFood Contact Safety

Experience well-being with **maiCompact Top**, offering tranquility, ease, and hygienic food preparation through its **maiFood Contact Safety**. Its non-porous surface prevents bacteria growth, ensuring cleanliness. Enjoy peace of mind and relaxation with effortless maintenance, prioritizing self-care.

## Perfect characteristics



High durability



Superb aesthetic value



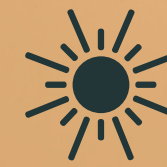
Excellent mechanical strength and dimensional stability



Water, steam, heat and wear resistant



Non corrosive



Great colour fastness



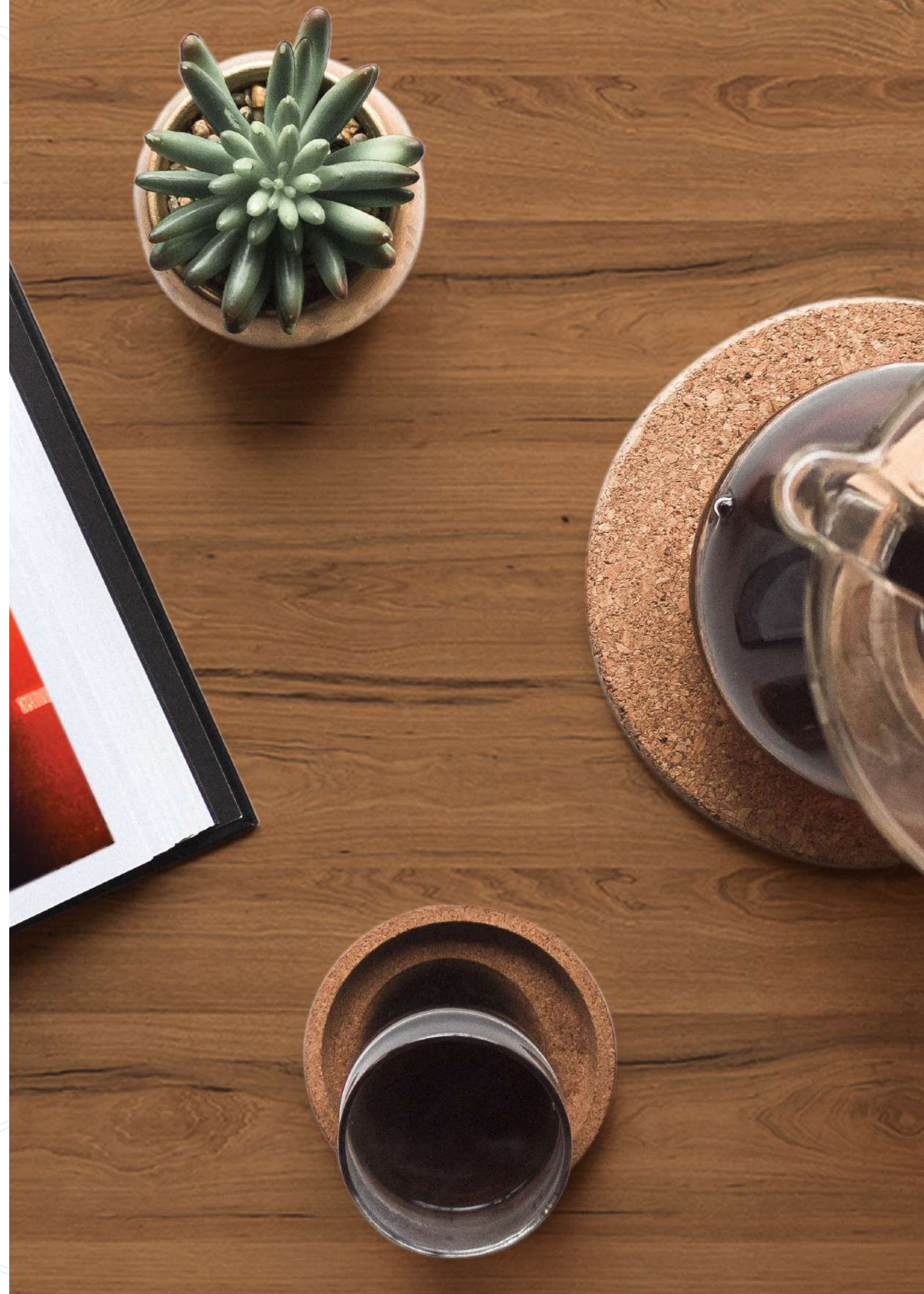
Easy care



# mai<sup>TM</sup> Compact Top

**maiCompact Top** elevates lifestyle through its utilization in interior design and furniture applications. With its exceptional durability, wear resistance, and easy maintenance, this high-pressure solid composite material provides a long-lasting solution for surfaces like countertops, tabletops, cabinetry, and wall panels. By integrating maiCompact Top, individuals can enjoy a practical and aesthetically pleasing living space that enhances their overall well-being and satisfaction.

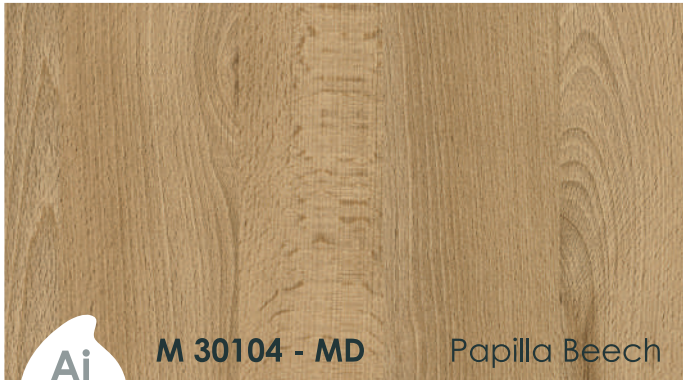
**maiCompact Top** ensures peace of mind with its **maiFood Contact Safety**, providing a safe and hygienic surface for food preparation areas. Its non-porous nature prevents the growth of bacteria, guaranteeing a clean and confident cooking and entertaining experience. Whether in home kitchens or commercial settings, **maiCompact Top** is the ultimate choice, catering to individuals who demand the best in their daily lives by effortlessly combining functionality and style.





Dual Colour Design to  
suits your style

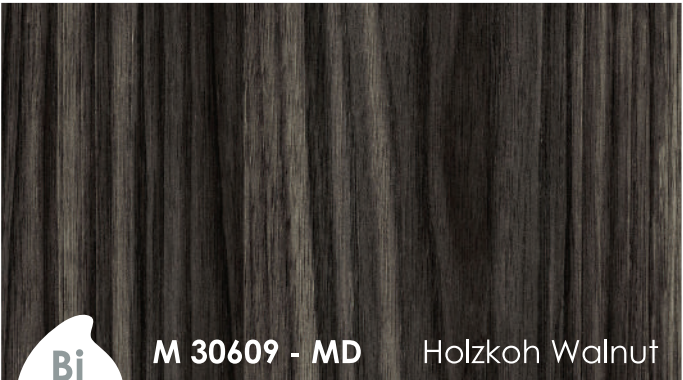
Size: 3670mm x 600mm  
Thickness: 6mm



M 30104 - MD    Papilla Beech



M 31205 - MD    Mita Teak



M 30609 - MD    Holzkoh Walnut



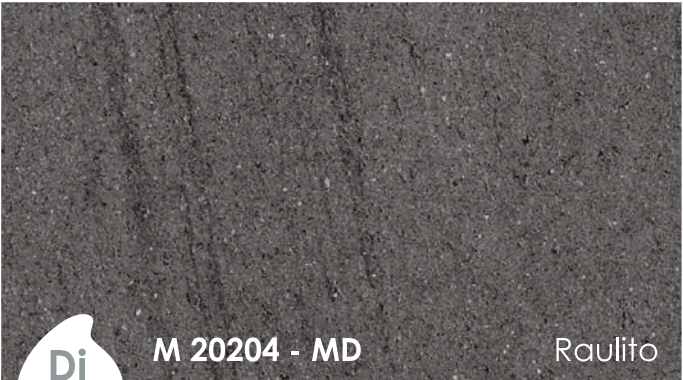
M 30612 - MD    Melmosa Walnut



M 31206 - MD    Pocoraro Teak



M 35404 - MD    Paso Hickory



M 20204 - MD    Raulito



M 20217 - MD    Borghini Marble



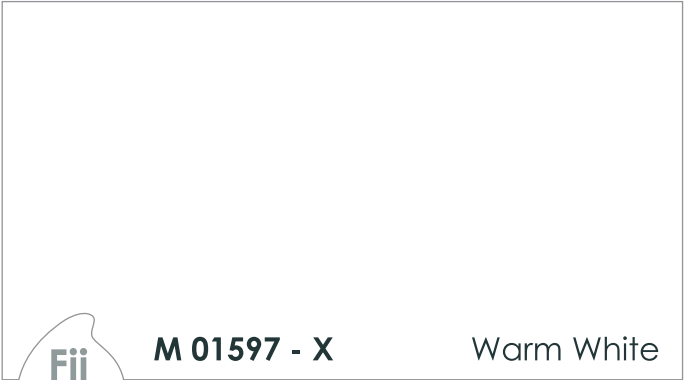
M 01028 - X    Charcoal Grey



M 11200 - X    Designer Black



M 01597 - X    Warm White



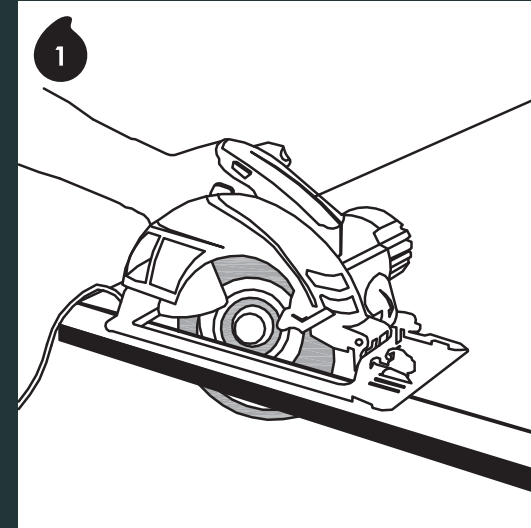
M 01597 - X    Warm White



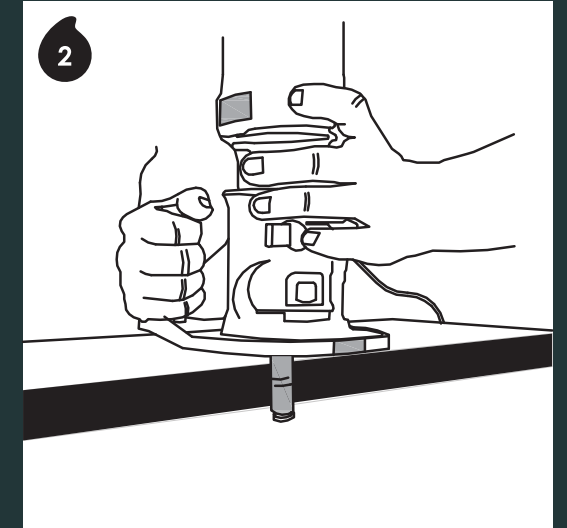
## Instruction Manual



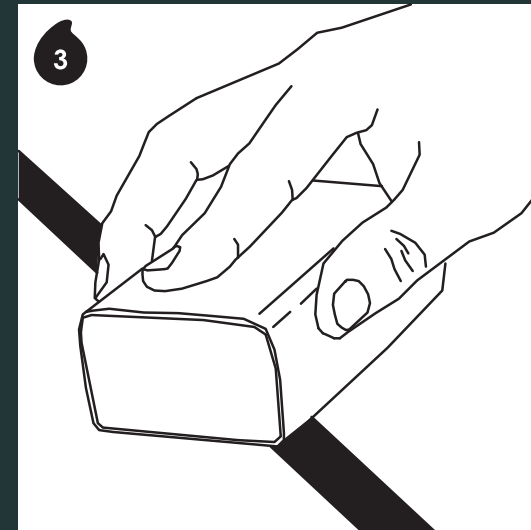
Convert your dream space into reality



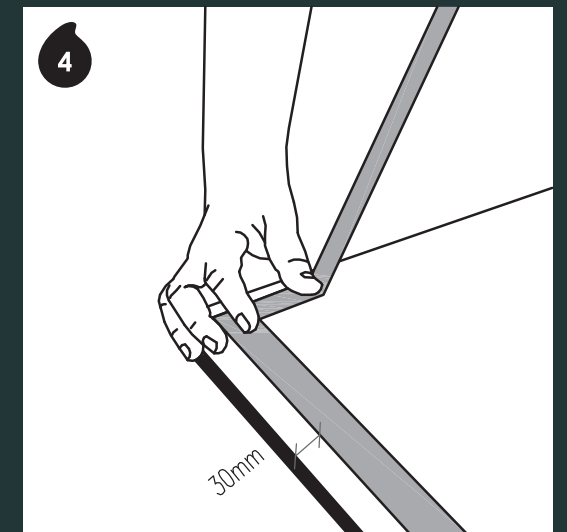
Measure the required sizes and cut with circular saw.



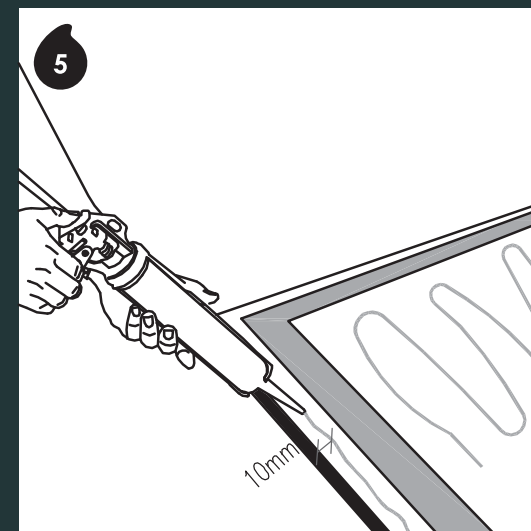
Apply router trimmer to polish & chamfer the edges.



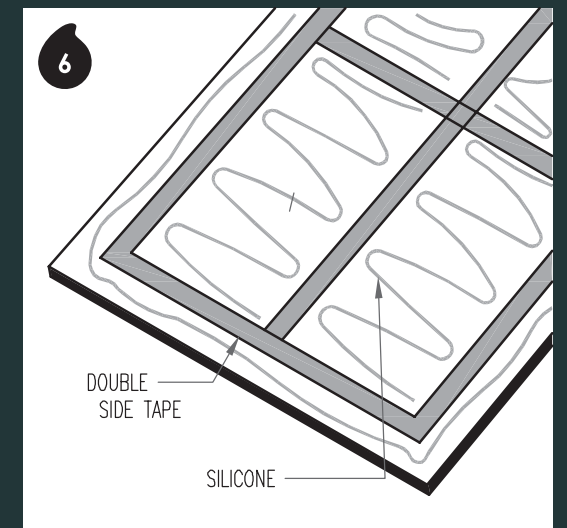
Use a sanding machine or sanding block to polish the edges for better finishing.



Apply 3M double sided tape on the underside of the maiCompact Top as Figure 6. Keep 30mm from the edging corner.



Apply silicone / max bond between double sided tape as Figure 6. Keep 10mm from the edging corner.



Apply method for double sided tape & silicone / max bond. After bonded to backing, firmly hold down for 30 seconds & leave it for 24 hours.

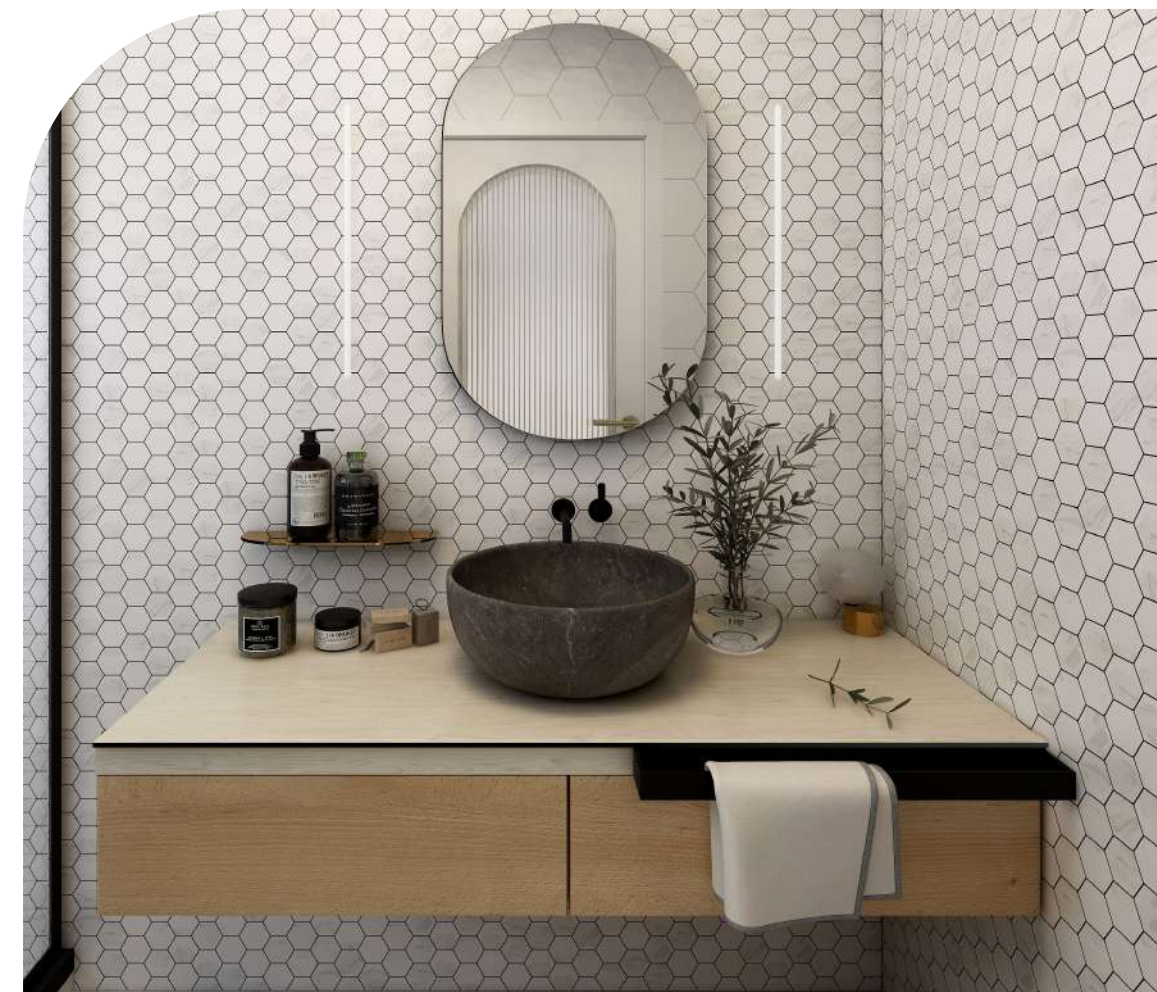




Contemporary



# Sophisticated





# mai<sup>TM</sup> Compliance



## Maintenance & Cleaning Instructions

### General Cleaning Instructions:

1. Use a clean, damp, non-abrasive cloth and mild soap, non-bleach or household cleaner.
2. Rinse with clear water, using a clean, non-abrasive cotton cloth.
3. Avoid flooding laminate particularly areas near to seams to prevent water from seeping in and consequently causing substrate to swell.
4. Dry laminate surface with a soft, clean, non-abrasive cotton cloth.

### For Stubborn Stains:

1. Food stains: Use a mild cleaner, detergent or general purpose cleaner, and a short, soft nylon-bristled brush to gently clean stains.
2. Ink stains: Remove stains immediately, using detergent or glass spray cleaner. Allow cleaner to remain on the stain for several minutes and then blot with a damp cloth before rinse.
3. Solvents such as denatured alcohol, nail polish remover or paint thinner can be used sparingly for very stubborn stains.

*Caution: Excessive use of solvents will damage the laminate finish and cause it more susceptible to stains. Do not use cleaning agents containing acid, alkaline or sodium hypochlorite on laminate surface to avoid corrosion or permanent discolouration.*

### To prolong the lifespan of Maica's laminate surface:

- Do not use laminate surface as a cutting or chopping surface.
- Always remove stains or marks immediately before they set. Once set, they require more aggressive cleaning procedures that may damage laminate surface.
- Place a trivet, insulated hot pad or other protective padding beneath all hot cookware, heat generating appliances or other heated objects instead of putting it directly on laminate surface.
- Do not use steel wool or abrasive pads on laminate surface, and do not place steel wools on it to avoid metal rust stains.
- Do not slide ceramics and abrasive objects across laminate surface as they may cause scratch and premature wear.
- Do not use acidic or abrasive cleaning agents on laminate surface as it may damage surface.
- Do not allow contact between any materials or items contaminated with acidic or abrasive cleaning agents and laminate surface.

### Disclaimer

- The samples and products of Maica are manufactured with certain tolerances. They may not originate from the same batch of production. Pigment variation and angle of observation may influence the colour of products. For accurate representation, customers are advised to request samples from our Sales Specialists.
- Sample chips in this catalogue are intended for viewing purpose only. For product tests, please request for actual product samples.
- Maica will not be responsible for any claim arising from any errors in pasting sample chips in the catalogue. Therefore, customers are expected to inspect the products they receive before fabrication or installation.
- Maica disclaims its responsibility for any surface defects that are potentially caused by general wear and tear, or placement of any items with base that is prone to cause scratches, discolouration or any impact that alters the nature and the appearance of the surface of the product, due to the materials they are made of.
- All information in this catalogue is correct at the time of printing. However, Maica reserves the rights to make changes to the information in this catalogue without prior notice.
- The liability of Maica for any potential manufacturing faults is limited to the cost of the products only.
- The investigation of Maica for any product claim is deemed final and conclusive.
- All rights reserved. No part of this catalogue may be reproduced, stored in a retrieval system or transmitted, in any form or by any means, electronic, mechanical, photocopying, recording or otherwise, without the written permission of Maica Laminates Sdn Bhd (Company Registration No: 107254-D).

### Maica Trademarks

'Maica', 'mai', 'mimai' and the 'maica' logo are trademarks of Maica Laminates Sdn Bhd.



maiAnti Bacterial



maiAnti Fungi



maiTermite Resistant



maiFood Contact Safety



The mark of  
responsible forestry





## Sales Enquiries

### **MAICA LAMINATES SDN BHD** [198301011860 (107254-D)]

Lot 226, Batu 7 ½, Jalan Padang Serai, 09600 Lunas,  
Kedah Darul Aman, Malaysia.

**T** : +604 - 352 0350

**F** : +604 - 352 0351

**E** : marketing@maica.com.my

### **MAICA CORPORATION SDN BHD** [198201010908 (90632-U)]

#### **Administration Office, Kedah**

Lot 226, Batu 7 ½, Jalan Padang Serai, 09600 Lunas,  
Kedah Darul Aman, Malaysia.

**T** : +604 - 352 0350

**F** : +604 - 352 0351

**E** : mchq@maicacorp.com

#### **Butterworth, Penang**

5100, Lorong Mak Mandin 5, Mak Mandin Industrial Estate,  
13400 Butterworth, Penang, Malaysia.

**T** : +604 - 411 2350

**F** : +604 - 411 2351

**E** : maicabtw@maicacorp.com

#### **Petaling Jaya, Selangor**

No. 25 & 27, Jalan PJS 7/21, Bandar Sunway,  
46150 Petaling Jaya, Selangor.

**T** : +603 - 9212 8200

**F** : +603 - 9212 8201

**E** : maicapj@maicacorp.com

#### **Johor Bahru, Johor**

No. 31 & 33, Jalan Mutiara Emas 5/23, Taman Mount Austin,  
81100 Johor Bahru, Johor.

**T** : +607 - 664 0351

**F** : +607 - 664 0352

**E** : maicajb@maicacorp.com

#### **Kota Kinabalu, Sabah**

No. 2A, Lot 22, Industry E33 Likas, Mile 2 ½, Jalan Tuaran Likas,  
88400 Kota Kinabalu, Sabah.

**T** : +6088 - 335 362

**F** : +6088 - 335 363

**E** : maicasbh@maicacorp.com

#### **Kuching, Sarawak**

Lot 128 - 130, Vista Industrial Park, Jalan Muara Tabuan,  
93350 Kuching, Sarawak.

**T** : +6082 - 268 602

**F** : +6082 - 268 603

**E** : maicaswk@maicacorp.com

# maiConnect Us

#### Website



#### Facebook



#### Instagram



#### YouTube



#### LinkedIn



**maiHotline** | **T** : +6016 - 416 5687





1 Brand  
Quality

Where  
Imagination  
Comes To Life

Some things  
never  
Change