

# Anti-Scuffing Report

## Anti-Scuffing for High Gloss mailLaminate / maiCompact

### SECTION 1:

#### Product and Company Identification

#### MANUFACTURER:

Maica Laminates Sdn Bhd  
5100, Lorong Mak Mandin 5  
Mak Mandin Industrial Estate  
13400 Butterworth, Penang, Malaysia.

#### MANUFACTURER'S EMERGENCY CONTACT:

Marketing Department  
Maica Laminates Sdn Bhd  
Tel: +604-332 7436 / 7437  
Fax: +604-332 6570

#### PRODUCT DESCRIPTION:

Glossy surfaces are considered a limited luxury in laminates because they are often associated with scratches, damages and handling issues. However, Maica has come up with an anti-scuffing surface for glossy laminates for its High Pressure Laminate (mailLaminate) and Compact (maiCompact) panels.

### SECTION 2:

#### Anti-scuffing Agent

#### HOW DOES ANTI-SCUFFING WORK?

- The surface of anti-scuffing laminates contains micro solid particles (combination of oxides and glass micro spheres). These particles increase the anti-scuffing performance of the laminates.
- The solid particles stay on the décor surface, improving the surface hardness and increasing the slipperiness against abrasive materials. These attributes help to improve the scuff properties of the finish product surface, as it reduces contact friction of the surface and abrasive materials.

### SECTION 3:

#### Test Method

Anti-scuffing performance is tested by using steel wool by the Maica laboratory.

The results of the examination for surface disturbance shall be expressed in accordance with the following rating scale:

Rating	Observation
+	Clear scuff marks or change of gloss
++	Moderate scuff marks or change of gloss
+++	Very fine scuff marks or change of gloss, only visible at certain angle
++++	No visible scuff marks or change of gloss

# Anti-Scuffing Report

## Anti-Scuffing for High Gloss mailaminate / maiCompact

### SECTION 3: Test Method (continued)

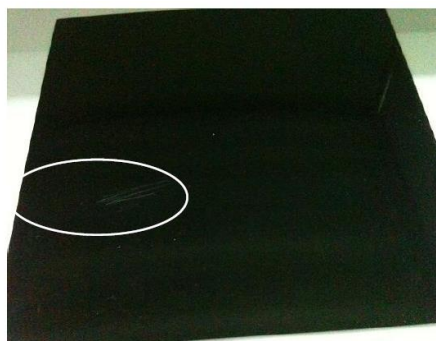


Steel wool

### SECTION 4: Result

Results show that mailaminate / maiCompact (glossy finish) with anti-scuffing additives improves the surface property against steel wool scuff compared to standard glossy melamine surfaces.

Product	Result (Rating)
mailaminate / maiCompact with anti-scuffing additive	+++
Standard high gloss melamine surfaces	+



Standard melamine surface



Anti-scuffing mailaminate

# Anti-Scuffing Report

## Anti-Scuffing for High Gloss mailLaminate / maiCompact

### SECTION 5:

#### **Conclusion**

High gloss mailLaminate / maiCompact with anti-scuffing additives improve the scuff resistance radically.

### SECTION 6:

#### **Applications**

##### **Public facilities**

Schools  
Sanitary facilities

##### **Office**

Counters  
Receptions

##### **Health care**

Hospitals

##### **Private household**

Kitchen  
Interior design

##### **Leisure area**

Shopping center  
Hotels